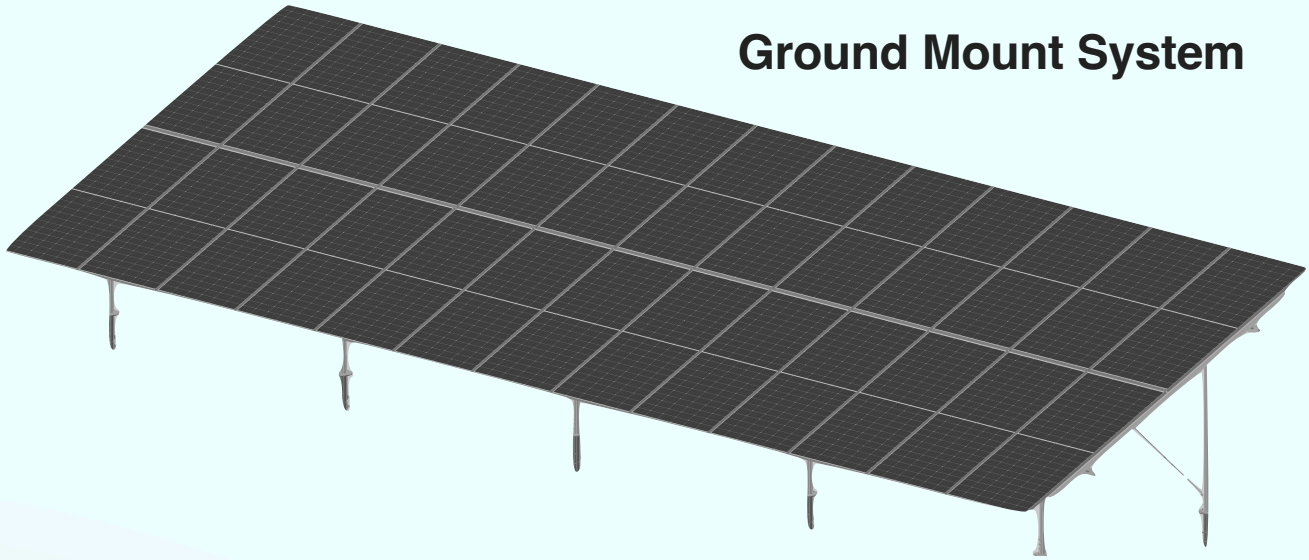




Assemble-Ready LEGO-Like Ground Mount System



SPECIFICATIONS

Panels: 575-600W, Bifacial Panels 2278x1134X30 mm

Panel Frame: Anodized Aluminum - MagicFrame Series

Rails: ZAM Steel P5500 Unistruts Channels Or Equivalent

Structure Material Coating: ZAM Or Galvanized Steel

Tilt Angles: 5° - 35°

Snow Load: Up To 5400 Pa Or 112 psf

Wind Load: Up To 2400 Pa Or 140 mphr

Mounting Orientation: Portrait 2-High

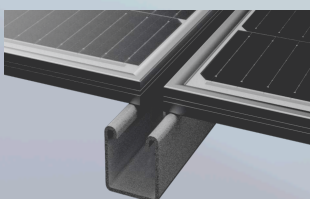
Operating Temperature Range: - 40 °C ~ + 85 °C

Warranty: 10 Years Structure And 25 Years Panels

Grounding: Integrated

Foundation: Not Included

Other Panel Sizes: Please Contact



MagicSolar™ Ground Mount System

Based on several awarded and pending patents.

World's first solar system securely fixed entire long frames and requires "No Clamps. No Bolts. No Clips".

It's Lego-Like and factory ready.

With 70% less parts compare to ordinary system, it takes 35 minutes to assemble, resulting in less labor and project time, and higher ROI.

The system is structural secure and packaged for on-site convenience, making the Ground Mount System "Safe. Speed. Simple."

The structure is proven, verified together with top solar farm investors and top solar panel producers.

Solar Panels Provided By JinKo LONGi SPiC Einnova Haitai S4A SEG Talesun Etc. 