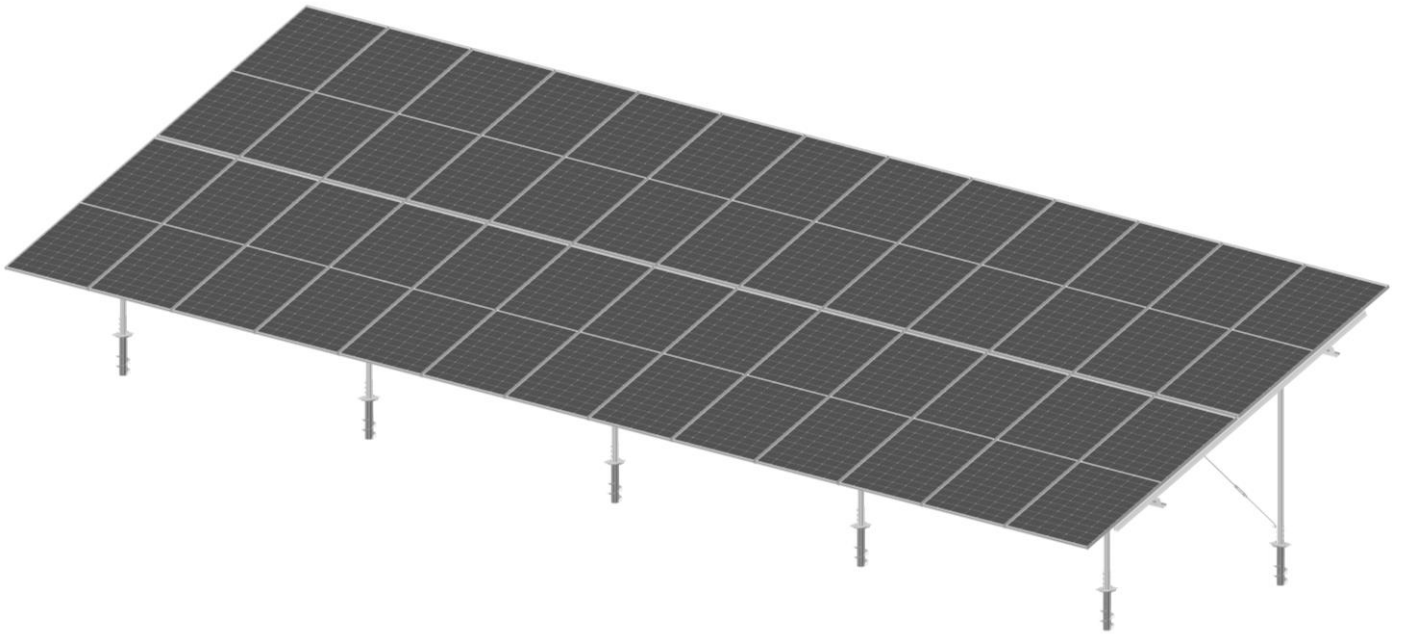


Ground Mount Double-Pole

MagicSolar System

Model G2P13



Lowest Total Cost

- Frame/Rack/Ground/Clamp
- Save \$7k/MW

Minimum Parts

- Regular Solar System 849
- Magic Solar System 263

Fastest Assembly

- Regular Solar System 45mins/26
- Magic Solar System 18mins/26

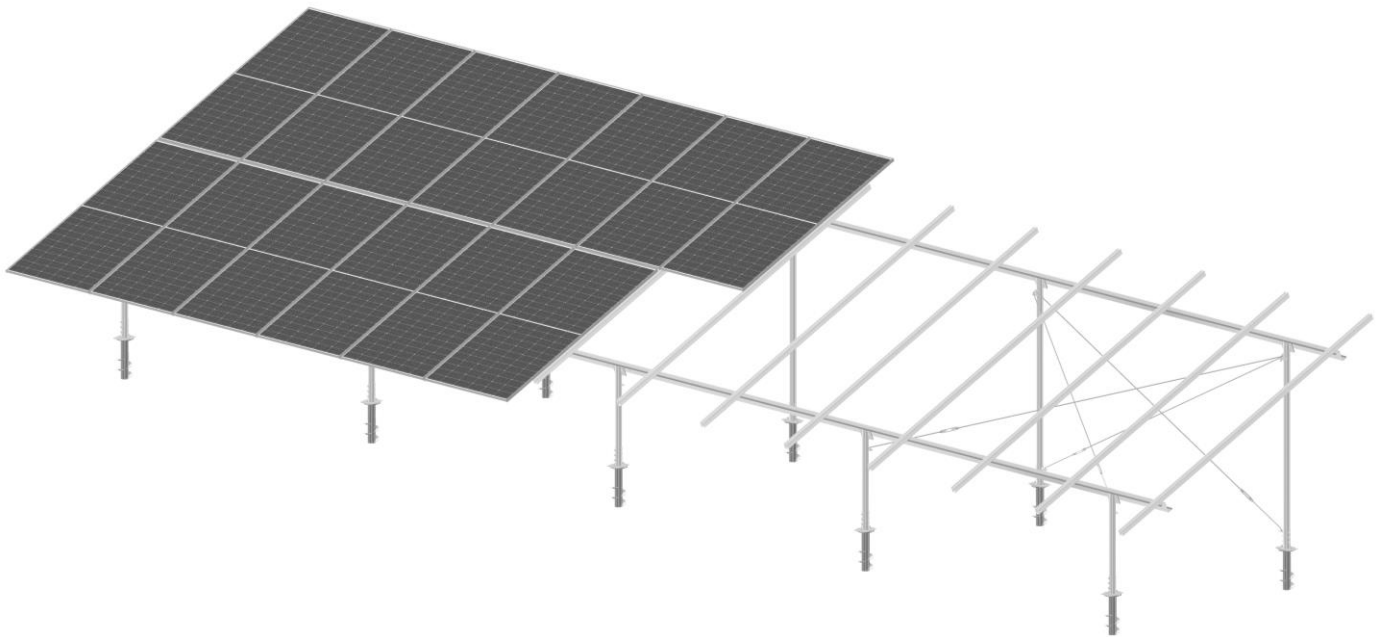
Machine Ready

- Regular Solar System Difficult
- Magic Solar System Testing

MagicSolar System

Specifications

Model G2P13



System Data

Applicable Areas	Suitable for various applications
Foundation Type	Various
Tilt Angle	0 ~ 35°
Height	As per design drawing
Module Orientation	Portrait
Compatible Modules	Various (MagicFrame®)
Mounting Materials	Steel/AL
Snow Load	< 2.0KN/m ²
Wind Load	< 63m/s
Warranty	10-year material warranty
Design Standards	National/Industry/Local standards
Operating Temperature Range	-40 ~ +85°C
Design Life	≥25 years

