

# DATA SHEET

## MODURACK BULL CLAMP

### KEY FEATURES

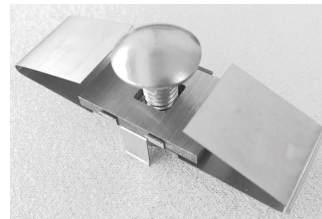
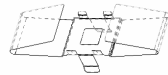
- Snap-n-lock
- Build in module alignment
- Hybrid top and bottom mounting
- Fit for most rails
- Integrated bonding
- SUS300 materials
- Build in rail tolerance
- Module to module gap 8mm

### PRODUCT BENEFITS

- Super fast and extra safety
- Enable machine installation
- Flexible for roof, carport and ground use
- No change on rails
- Eliminate bonding cost
- Good for any areas
- Easy on installers
- Increase 1% module density

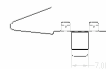
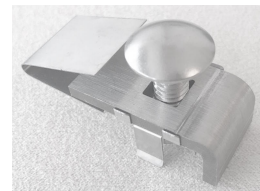
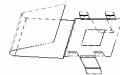
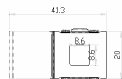
Bull Clamp Kit For First Solar S6  
incl. Bull Clip, Clamp, Bolt, Nut, Grade 18-8 Stainless Steel, 1000 Pcs

MR-C6  
Bull Clamp



Bull End Clamp Kit For First Solar S6  
incl. End Clip, End Clamp, Bolt, Nut, Grade 18-8 Stainless Steel, 1000 Pcs

MR-C6  
Bull End Clamp



Fastener

5/16 -18 X 1 in, Carriage Bolt  
5/16 -18 Hex Serrated Flange Nuts  
Grade 18-8 Stainless Steel

Release Tool

