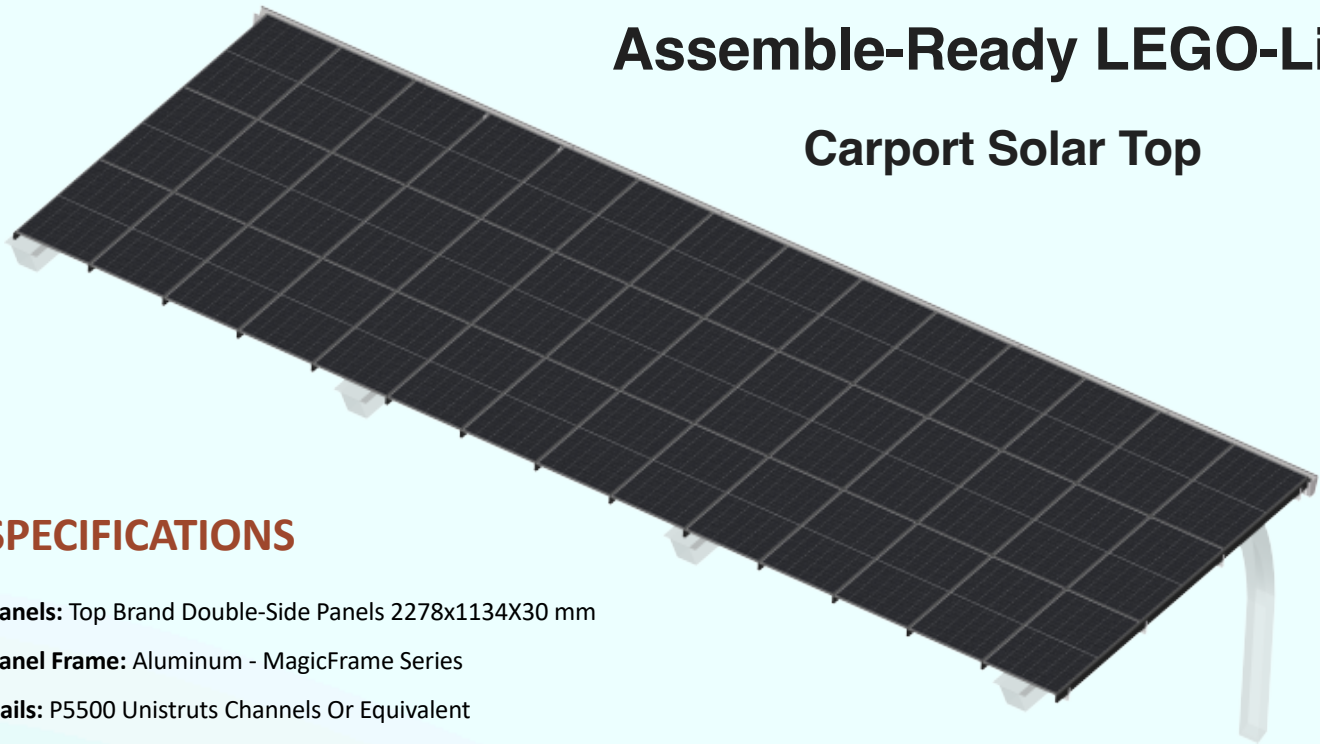




Assemble-Ready LEGO-Like Carport Solar Top



SPECIFICATIONS

Panels: Top Brand Double-Side Panels 2278x1134X30 mm

Panel Frame: Aluminum - MagicFrame Series

Rails: P5500 Unistruts Channels Or Equivalent

Channel Coating: ZAM Steel

Tilt Angles: 5 °-45 °

Snow Load: Up To 5400 Pa Or 112 psf

Wind Load: Up To 2400 Pa Or 140 mph

Mounting Orientation: Portrait Up To 6-High

Operating Temperature Range: - 40 °C ~ + 85 °C

Warranty: 25 Years

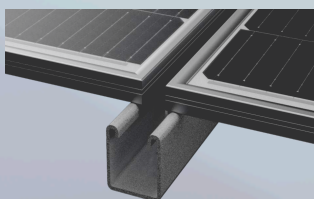
Fitting: Any Carport Or Canopy Structures

Water Management System: Integrated

Grounding: Integrated

Other Panel Sizes: Please Contact

Other Load Requirements: Please Contact



MagicSolar™ Carport Solar Top

Based on several awarded and pending patents.
World's first solar system securely fixed entire long frames and requires "No Clamps. No Bolts. No Clips".

It's Lego-Like and fits any carport or canopy structures.
No back shadowing on back side of solar panels, resulting in more power generation and higher ROI.

The structure is water tight, eliminated the need of extra water management system. Making the Solar Top "Safe. Sleek. Simple."

Solar Panels Provided By JinKo LONGi SPIC Einnova Haitai Etc.

